

For More Information:

The Shore Primer. Produced by Cottage Life in association with Fisheries and Oceans Canada.
<http://www.muskoka-waterweb.ca/images/dfo/ShorePrimer-English.pdf>

Preserving and restoring natural shorelines. LandOwner Resource Centre. http://www.lrconline.com/Extension_Notes_English/pdf/shrlns.pdf

Restore your shore. The Stewards Guide Series. http://www.muskokawatershed.org/wp-content/uploads/2011/12/Shoreline_Guide1.pdf



Anishinabek/Ontario
Fisheries Resource Centre
755 Wallace Road Unit #5
North Bay, ON P1A 0E7

Tel: 705-472-7888

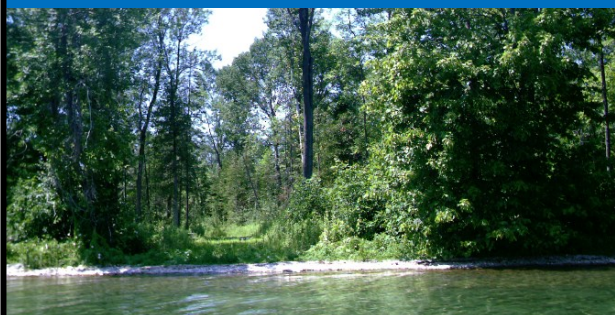
Fax: 705-472-6333

Email: aofrc@aofrc.org



An Information Pamphlet for Chippewas of Georgina Island

Protecting the Ribbon of Life: Where the Water and Land Meet



What you need to know

What you can do to help

Protecting the Ribbon of Life: Where the Water and Land Meet

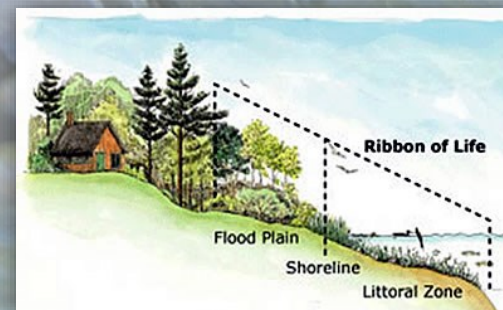
The shoreline zone is the first 30 meters from the shoreline inland.
This is the most sensitive area of the shore, and needs the most protection.

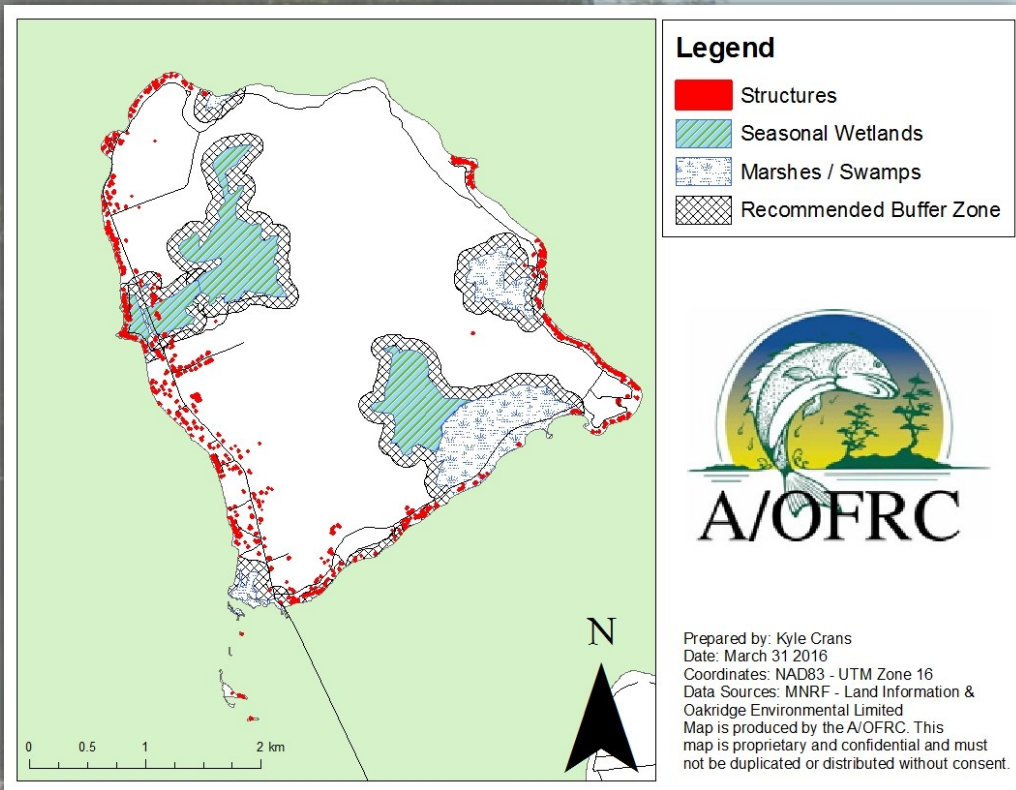
The shoreline of your community and personal property acts as an important buffer and filter for the water the flows into Lake Simcoe.

In order to protect the waters, the shoreline needs to be looked after, and an attempt made to keep it in its natural state.

Functions of the shoreline:

- Provides filtering of runoff waters into the lake
- Prevents soil erosion by having a natural shoreline; the roots of plants will hold the soil together.
- Leaves, stems, stalks and other organic materials provide forage for fish and other wildlife
- Vegetation on the shoreline provides spawning and nursery habitat in the spring
- A well vegetated shoreline provides shade and looks great!





This map shows the critically important marsh and wetland habitats on Georgina Island. They need protection similar to that of the shorelines too!

Shoreline habitat is of critical importance to spawning fish species. Protect the shoreline by keeping a natural shoreline, and ensure healthy fish populations for future generations!

Fish Species that spawn in the waters surrounding Georgina Island

- Northern Pike
- Common Carp
- Smallmouth Bass
- Lake Herring (Cisco)
- Lake Trout
- Lake Whitefish

How protect the shoreline:

- Replant and protect native shrubs and grasses in the shoreline zone
- Reduce foot and vehicle traffic through the shoreline zone
- Reduce wake from watercrafts when approaching the shore
- Refrain from, or reduce the building of structures within the first 30 metres from shore
- Avoid any construction projects that harden or increase the slope of the shoreline, as this leads to increased erosion
- Avoid the use of lawn fertilizers

Shoreline-friendly Native Shrub Species:

- Virginia Creeper
- Highbush Cranberry
- Red-osier Dogwood
- Wild Grape
- Shrubby Willow
- Sweet gale
- Sumac
- Alder